

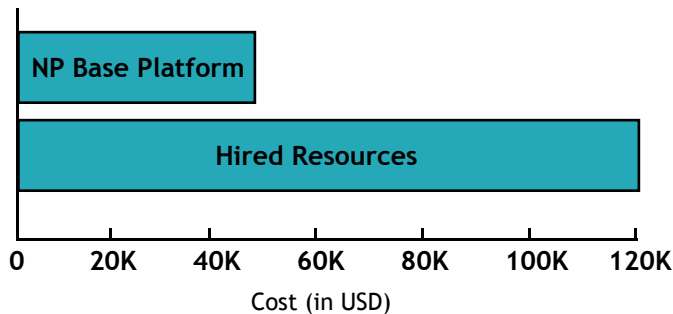


A Linux Distribution Optimized for Embedded Devices

Overview

Network Persona (NP) Base Platform is based on the latest, most stable version of the Linux Kernel, and comes with features and tools that reduce time to market and lower the cost of building Linux-based devices and applications. To meet the resource constraints of cost sensitive appliances and devices, NP Base Platform provides a highly optimized version of the Linux kernel and runtime applications, utilities and libraries that make up a Linux environment. NP Base Platform has minimal RAM and storage requirements and includes an Eclipse based NP IDE for developing custom drivers and applications.

Cost Advantage of NP Base Platform



Time Advantage of NP Linux



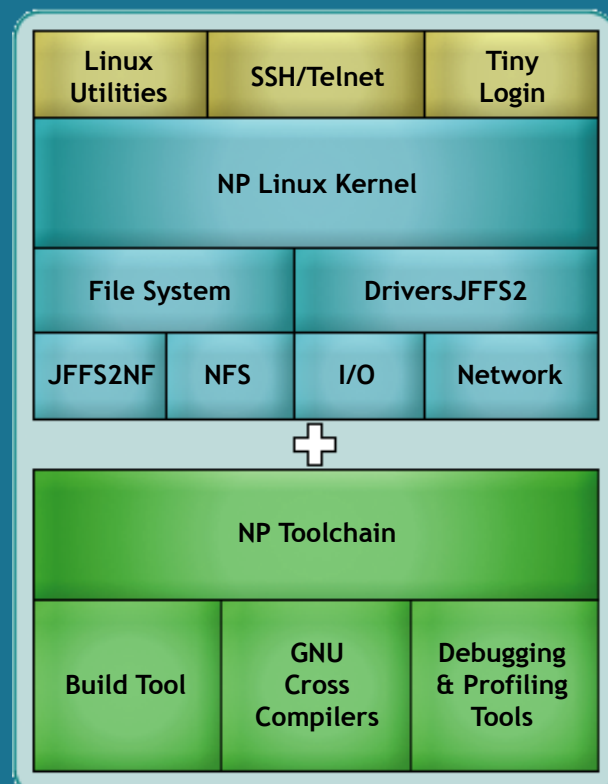
Applications

- **Consumer**
 - Home Multimedia
 - SOHO Gateways
- **Industrial**
 - Industrial Automation
 - Machine Control
 - RFID Readers
- **Retail**
 - Point-of-sale
 - Supply Chain Infrastructure
- **Networking**
 - Broadband Wireless Access
 - Wireless Devices
- **Security**
 - Home Security
 - Network Security Devices

Highlights

- Supports v2.4 and v2.6 Kernels
- Eclipse based IDE
- Preemptive kernel and Real-time scheduler
- Enhanced Network drivers
- Support for well known CPU Architectures
- Support for Java™ VM
- μClinux kernel non-MMU ARM Processors

NP Base Platform Layer Diagram



Features

Powerful:

- Supports Linux 2.4 or 2.6 kernel
- Support for Posix threads
- Support for JAVA Virtual Machine
- Support for RTAI
- Preemptive kernel
- Highly optimized and enhanced libraries
- NAPI based improved performance network drivers
- Support for conventional and journaling file systems
- Support for Remote Debugging
- Support for Memory leak detection

Compact:

- Reduced Memory Footprint
- Typical kernel footprint < 500k
- Linux kernel + Gateway applications ~2 MB
- Support for µClinux kernel for non-MMU ARM processors

Advanced:

- Bundled with Compact Shell utilities
- Supports IPv4/IPv6
- Fully qualified and tested for all known architectures
- Fully integrated with NP BloX, NP VPN, NP Gateway, NP VOIP network applications

Support:

- Access to 24 hr email support
- Long term “product life” support
- Custom BSP/Driver development support
- Hands on training available

NP IDE:

- Eclipse based advanced Integrated Development Environment (IDE)
- Support for Graphical Debugging/profiling
- Graphical Configuration tool to customize the kernel and application features with point and click
- Ability to build entire binary image with a click
- Easy to integrate custom applications
- Supports all known Linux development Hosts

Supported Processors

MIPS

1. AMD Alchemy Au1000, Au1100, Au1500
2. IDT RC323xx
3. PMC Sierra RM7000
4. Toshiba TX3927
5. MIPS 4Kc, MIPS32 cores.

PowerPC

1. Motorola MPC603, MPC603e, MPC604
2. Motorola MPC7xx
3. Motorola MPC74xx
4. Motorola MPC8xx
5. IBM 405 series

x86

1. Intel i386, i486, Pentium, Pentium Pro, Pentium II, Pentium III, Pentium 4
2. AMD K5, K6, Athlon, ELAN
3. Cyrix MediaGX
4. AMD Geode

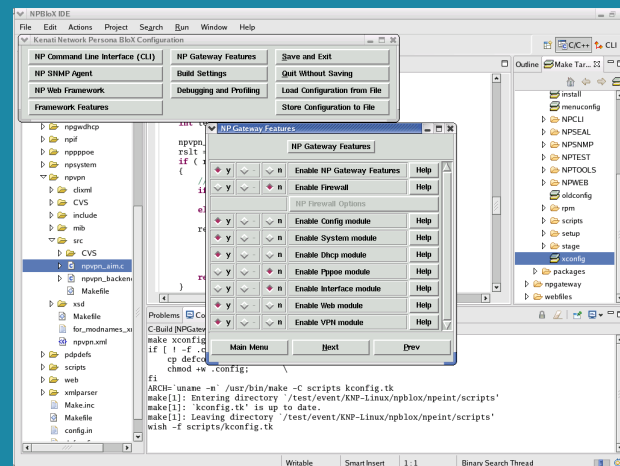
ARM

1. ARM7 (with or without MMU)
2. ARM9
3. StrongARM
4. Intel Xscale IXP4xx

Supported Evaluation Platforms

1. AMD Alchemy Db1000, Db1100, DB1500
2. Ampro Encore M3
3. IBM Walnut
4. Motorola Sandpoint
5. Galileo/Marvell EVB64240 5150

NP IDE



800 W. California Ave,
Ste. 220, Sunnyvale, CA 94086
Tel: +1-408-738-2000 Fax: +408-738-1900

<http://www.kenati.com>